

# OVERVIEW

## Knowing what your machine can do

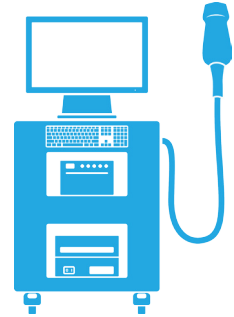
### Full size

#### PRO

- Complex techniques
- Wired to archive
- Optimal quality

#### CON

- Heavy
- Difficult to steer
- Expensive



### Laptop

#### PRO

- Portable
- Moderate cost
- Reasonable functionality

#### CON

- Not usually wired to archive
- Reduced imaging quality



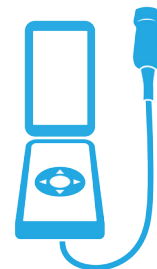
### Handheld

#### PRO

- Highly portable
- Cheap

#### CON

- Limited functionality
- Limited storage
- Imaging can be challenging



### Probes

